

Windy City Power League Site Directions

Adversity Volleyball Center

Adversity Volleyball Center is located at: 700-710 Corporate Woods Parkway, Vernon Hills, IL 60061

700 Corporate Woods Parkway, is located just west of Milwaukee Ave (Route 21) midway between Route 22 (Half Day Road) and Route 60 (Town Line Road) in Vernon Hills.

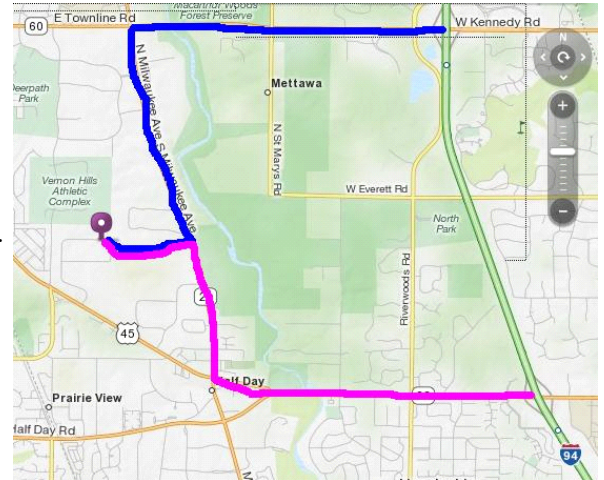
- If taking 294/94 you may exit at either 22 or 60 and head west

From the East on Half Day Road (Rte 22), make sure to turn right at **Old Half Day Road** to Milwaukee (Rte 21). On Milwaukee, you will pass Life Time Fitness at a light on the left. Corporate Woods is the next light. Turn left and go west for about 1/2 mile and turn right into the Adversity parking lot.

From the East on Town Line Rd (Rte 60), turn left on Milwaukee (Rte 21). The road will go from 3 lanes to 2 and you will then turn right at the next light (past a Smith Furniture store) go west for about 1/2 mile and turn right into the Adversity parking lot.

NOTE: Parking is available in all lots around the two buildings except for directly in front of the 730 & 740 doorways. **Parking to the north of the 730 door is reserved for those tenants.** All spots surrounding the two buildings are available. Sidewalks run along the south side of each building.

Parking is allowed on the **NORTH SIDE** of Corporate Woods Parkway only on the weekends and is signed



Or use Mapquest.com for specifics from your location

Joy of the Game

Joy of the Game— also known as **North Shore Sports and Wellness** is located at **158 S. Waukegan Rd. Deerfield, IL 60015**
847-828-4650

Use Mapquest for specific directions from your location

Note: Facility is directly behind the Deerfield Shopping Mall



Palos Courts

Palos Courts is located at: 12221 S. Ridgeland Ave., Palos Heights, IL, 60463. 708/389-9100x10 or 21

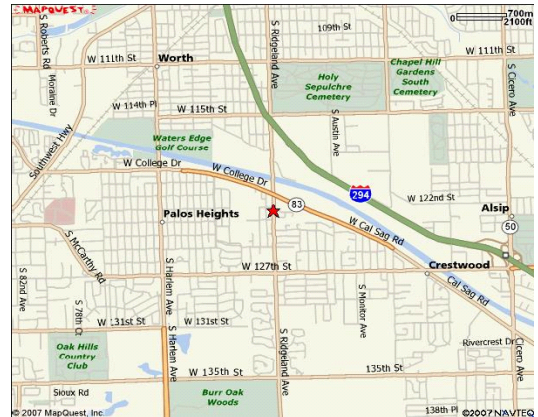
From I-294

Option 1: Take 294 to the 127th Street Exit- exit West onto 127th St. Go to the stoplight after the bridge which will be Rt 83. Turn right onto Rt. 83. Continue to Ridgeland Ave. Left on Ridgeland and the facility will be on your left ½ block down.

Option 2: Take I-294 to the 95th Exit. Go EAST to Ridgeland – right on Ridgeland and continue to just after crossing Rt 83 (light after the bridge) the facility will be on your left.

Or use Mapquest.com for specific directions from your location.

Parking: CAUTION!!!! DO NOT park along the fence or in areas marked **NO PARKING!**. This includes the Mama Vesuvio parking lot. There are extra spaces available at the body shop next door or the church located ½ block south of the facility. You risk having your vehicle towed or ticketed by the Palos Heights Police Department. Try to car pool as much as possible.



Sky High Athletic Center

Sky High Athletic Center– 215 Exchange Dr., Suite E, Crystal Lake, IL 60014 815-356-0006

Take 90 west to 31 north. Take 31 into Crystal Lake.

Exit at route 14. Turn left at top of ramp.

Proceed four lights to Exchange Drive. Turn right on Exchange.

Proceed through the first stop sign and continue to the dead end on left.

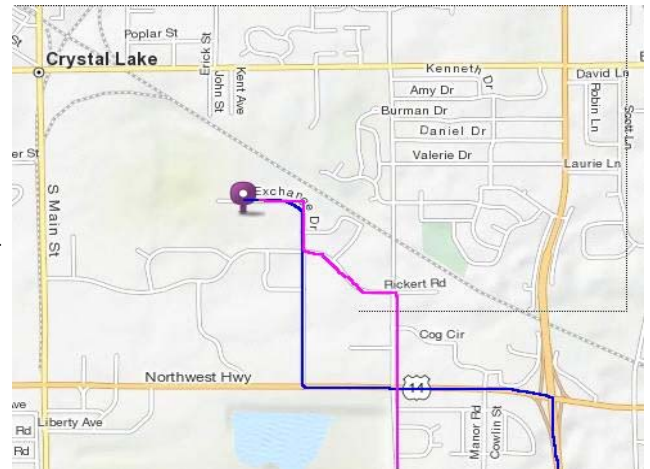
OR

Take 90 west to Randall Rd. exit. Turn right or north on Randall Rd. Randall Road curves to the east (right) and becomes Rakow Road.

Follow Rakow Road east to Pingree Road and turn left (north). Stay on Pingree, past Rte. 14 (NW Hwy) and turn left at Congress/Rickert Rd.

Turn right on Exchange Dr. and follow it all the way to the end. SHAC is on the right hand side.

Or use Mapquest.com for specifics from your location



Sky High Northshore (formerly Kratos)

Sky High Northshore is located at: 1450 Harris Rd Libertyville, Illinois, 60048

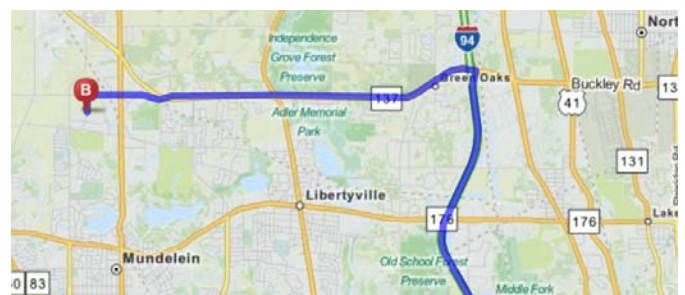
From 294– Take I294 to IL-137/Buckley Rd exit
Go west on Buckley (which turns into Peterson) to Harris Rd
approx 5.5 miles

Turn **left** onto **Harris Rd.**

Harris Rd is .2 miles past Franklin Blvd

If you reach N Midlothian Rd you've gone too far

Or use Mapquest.com for specifics from your location



1st Alliance Training Center (formerly Sunsetters VB Center)

1st Alliance Training Center: 1000 Davey Road, Suite 600 Woodridge, IL 60517 (630) 783-8681
(We are located one block south of Internationale Parkway and Lemont Road!)

DO NOT MAPQUEST OR GOOGLE THE ADDRESS - YOU WILL GET INCORRECT DIRECTIONS!!

DIRECTIONS from the North (via I-355):

I-355 south to I-55 Stevenson Expressway North (to Chicago)

I-55 to Lemont Road South - EXIT Lemont Road South
Continue on Lemont Road past the R/R tracks. There is a light at Internationale Parkway.

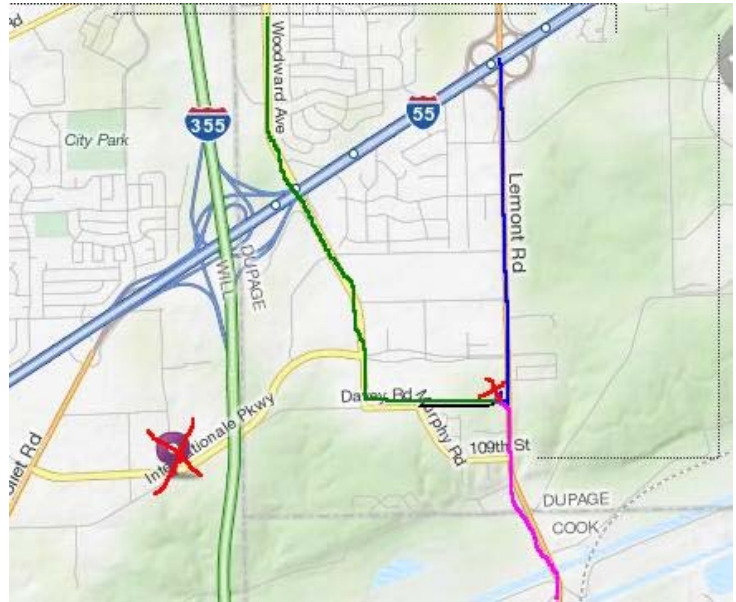
Davey Road is the next street on your right. There is a traffic light. Turn right onto Davey Road.

First driveway on your right make a right. Go up the hill.

We are the building directly IN FRONT of you.

You will be facing the back of the building. Drive around to the front of the building.

Look for the signs!



Directions from the North (via Tri-State I-294)

I-294 South to I-55 Stevenson Expressway South (to St. Louis) - EXIT at I-55 South

Continue on I-55 South to Lemont Road South - EXIT Lemont Road South.

[Follow remainder of instructions from above](#)

Directions from the South (via Tri-State I-294)

I-294 North to I-55 Stevenson Expressway South to St. Louis - EXIT I-55 South.

Continue on I-55 South to Lemont Road South - EXIT Lemont Road South.

[Follow remainder of instructions from above](#)

Directions from West (Naperville area):

75th Street east to Woodward. Turn right (south). Proceed on Woodward until it dead ends (approx. 4 miles)
(Note: You will go over I-55. Woodward becomes Morey at Internationale Parkway.)

Turn left on Davey Road. Continue east on Davey past the stop sign (there is a school on your right).

First driveway on your left you will see a building address numbered 1020.

Turn left - proceed up the hill - we are the building in front of you.

You will be facing the back of the building. Drive around to the front entrance.

Max McCook Athletic & Expo

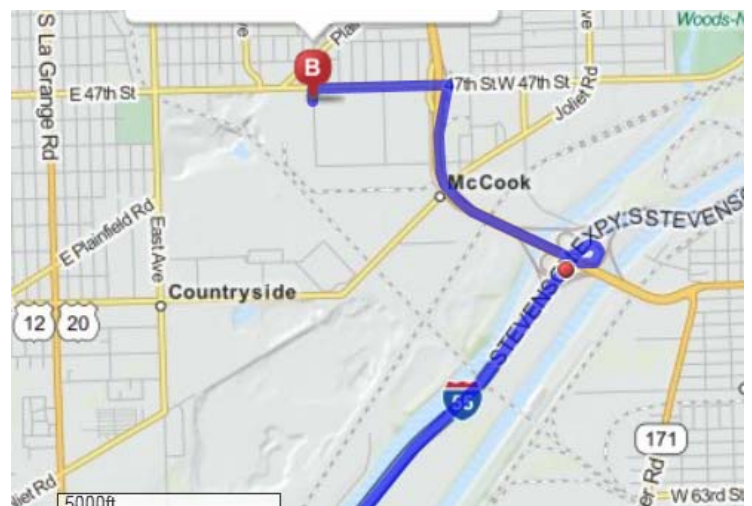
4750 S Vernon Ave, McCook, IL 60525

I-55 to 1st Ave (Rt 171) North on 1st Ave to 47th St. West on 47th street.

Vernon Ave is about 1/2 mile west of 1st Ave.

Large orange, white & black building on 47th St just east of East Ave.

[Or use Mapquest.com for specifics from your location](#)

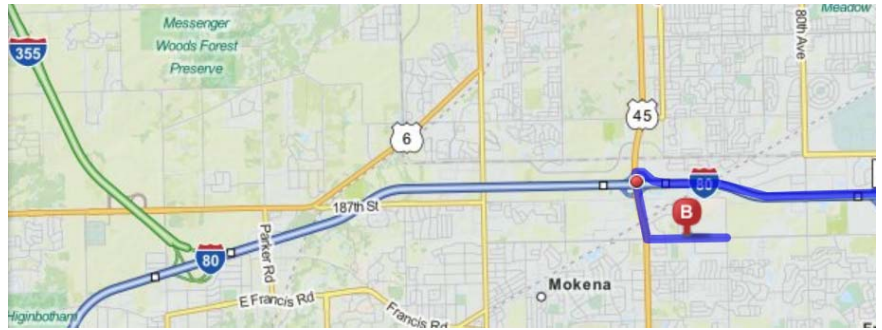


Ultimate Velocity All Sports

**Velocity All Sports is located at:
9120 W 191st Street | Mokena, IL 60448**

Take I-80 to Rt 45 (LaGrange Rd)
Go south on Rt 45 to 191st St
Turn left on 191st to address.
Facility will be on your left-(northside of street)

From 355: Exit at I-80 East to Rt 45
Follow remainder of above directions



Or use Mapquest.com for specifics from your location

Velocity Directions & Free Shuttle Service-

FREE SHUTTLE SERVE will run round trip from Velocity & Train station. Service will start at **7 am**.

See Train Station directions below.

Highly Recommended that you **DROP OFF Athletes First** at Velocity, then proceed to Train Station to Park and take Free Shuttle.
No need to walk.

Velocity Facility rules:

- No Bag Chairs
- No Outside Coffee Beyond Admissions
- No Outside Food
- Special Dietary Needs - Hand in Player Name & Club at concessions

To view a map, click on the link below or copy and paste it into your browser: [http:// mapq.st/2gJpwYu](http://mapq.st/2gJpwYu)

From: **9120 W 191st St Mokena, IL 60448-8727**

To: **Hickory Creek Dr Mokena, IL 60448**

1 MIN | 0.54 MILES

CURRENT TRAFFIC: LIGHT



Start out going west on W 191st St/County Hwy-84 toward Jodi Rd.

0.16 miles



Take the 2nd right onto Hickory Creek Dr.

Hickory Creek Dr is just past Jodi Rd

If you reach Henry Dr you've gone about 0.1 miles too far

0.38 miles

Hickory Creek Station, Hickory Creek Dr, Mokena, IL, HICKORY CREEK DR.

